

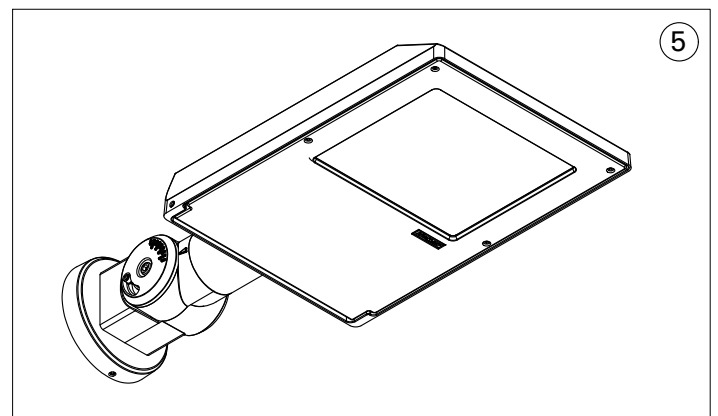
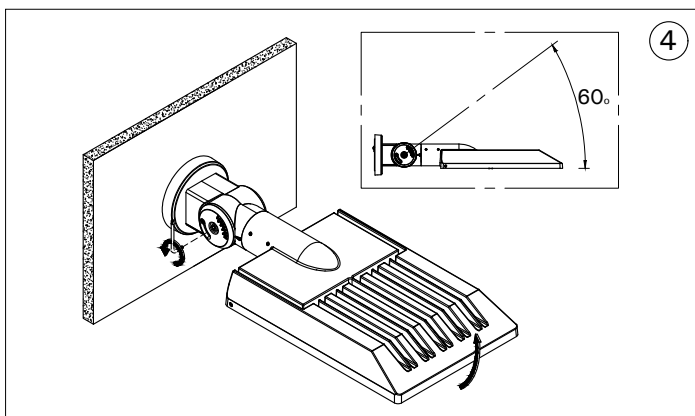
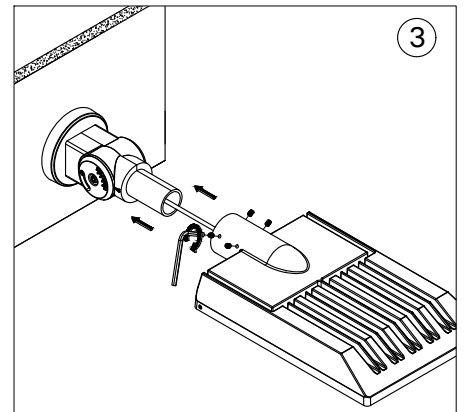
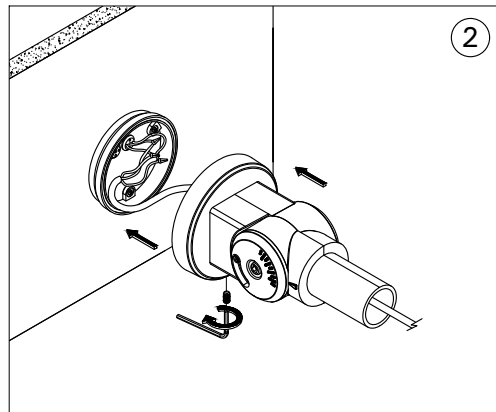
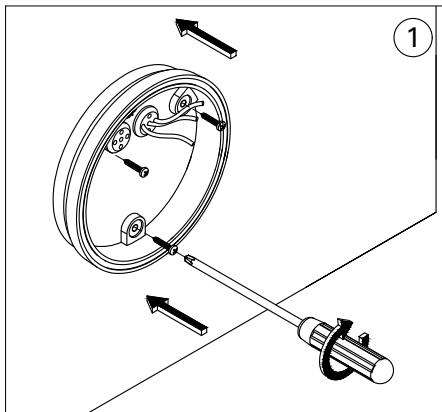
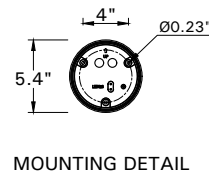
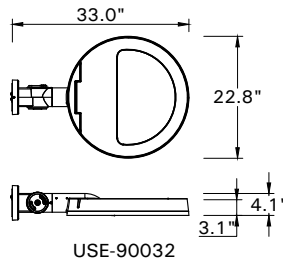
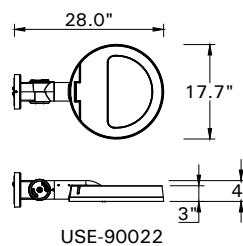
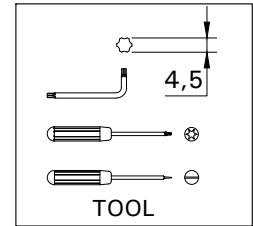
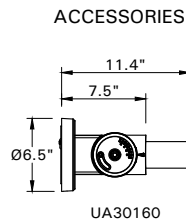
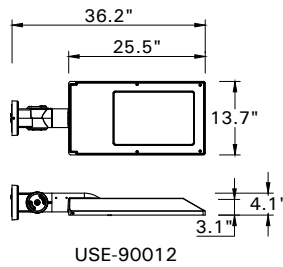
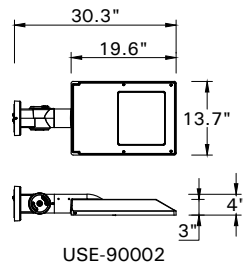
# INSTALLATION AND SERVICE MANUAL

**LIGMAN**  
LIGHTING USA

For Installation of Steamer Wall Light LED & Accessories  
Model. USE-90002, USE-90012, USE-90022, USE-90032 & UA30160

## Product drawing (dimensions)

CE IP66 CLASS I IK07



- LIGMAN standard products are supplied with the control gear 24Vdc.  
The control gear for other voltages and frequencies is available upon request, please consult us for more details.
- LIGMAN luminaires are designed to conform IEC 60598 2-18 standard.  
Technical amendments and modifications techniques reserved.

**Ligman Lighting USA**

7144 NE Progress Court, Hillsboro  
Oregon, 97124, USA  
Tel : 503 645 0500 | Fax : 503 645 8100

[www.ligmanlightingusa.com](http://www.ligmanlightingusa.com)